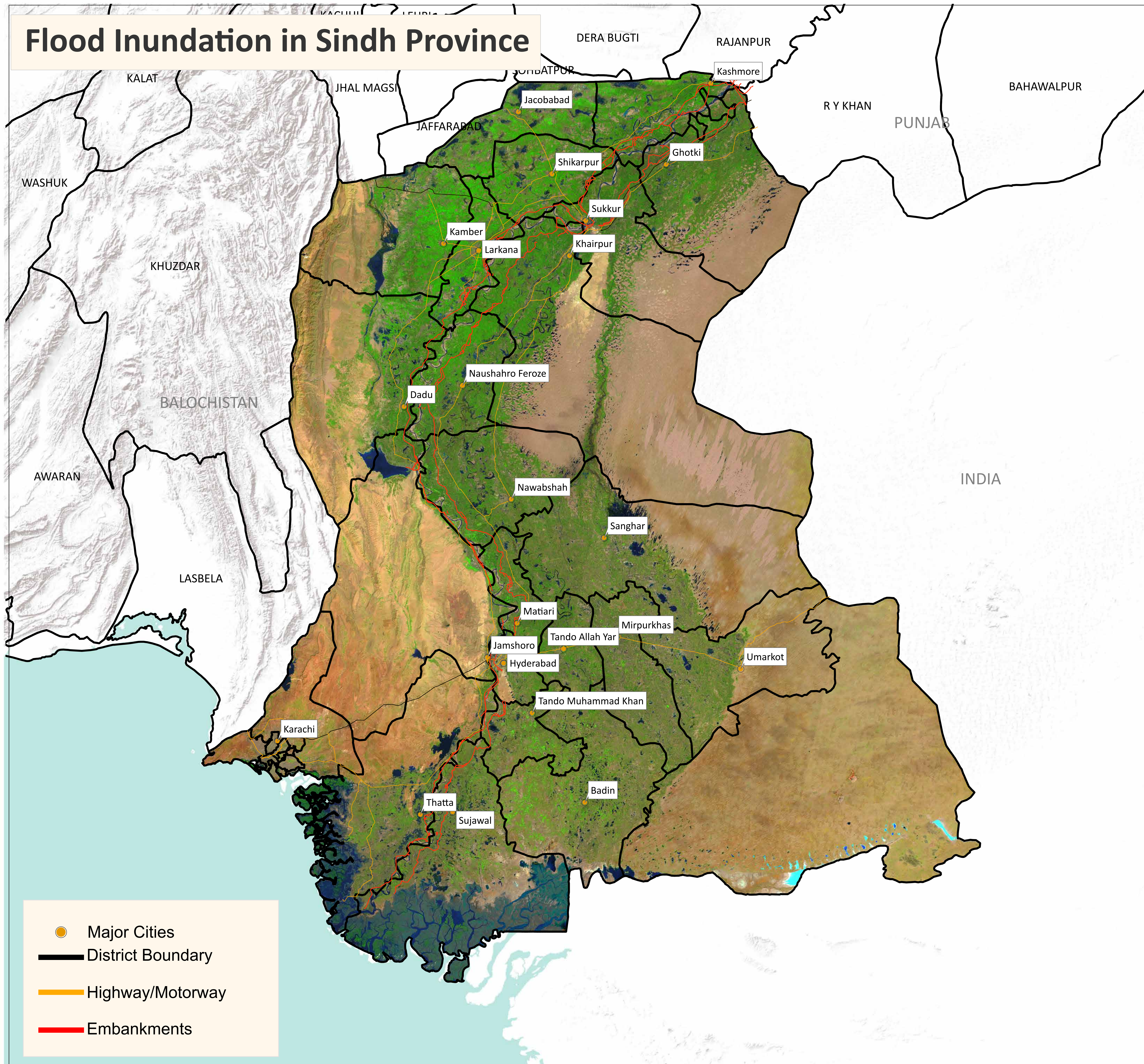
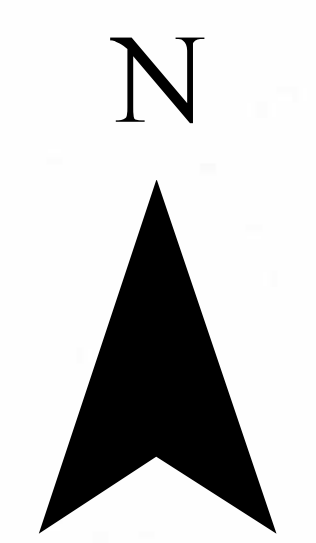


Flood Inundation in Sindh Province



- Major Cities
- District Boundary
- Highway/Motorway
- Embankments

S.no	District	Total Area in Sq.Km	Water Bodies in Sq.Km	Previous Inundation in Sq.Km (12/01/2023)	Current Inundation in Sq.Km (09/03/2023)
1	Kashmore	2,549.03	298.81	321.67	218.78
2	Jacobabad	2,769.36	75.45	469.07	193.43
3	Shikarpur	2,576.89	113.86	263.86	123.89
4	Larkana	1,906.34	112.79	142.23	84.41
5	Kamber Shahdadkot	5,596.44	35.21	455.85	241
6	Dadu	8,032.00	142.88	575.65	212
7	Naushahro Feroze	3,025.48	140.23	298.94	174.10
8	SBA	4,615.16	144.36	272.27	185.96
9	Sanghar	10,259.02	215.41	573.23	470.73
10	Jamshoro	11,250.32	258.81	312.29	227.41
11	Hyderabad	1,021.54	27.87	53.22	40.63
12	Matiari	1,458.04	52.82	66.93	48.34
13	Tando Allah Yar	1,572.86	9.4	60.29	35.33
14	TMK	1,813.46	55.36	86.92	58.14
15	Badin	6,470.00	249.81	305.69	215.66
16	Sujawal	8,699.20	1052.73	1,387.95	1,514.88
17	Thatta	7,704.00	854.57	1,068.73	1,291.27
18	Sukkur	5,212.05	160.98	157.34	133.28
19	Khairpur	15,925.04	172.85	488.91	332.07
20	Ghotki	6,506.18	124.16	205.62	148.70
21	Mirpurkhas	3,319.16	16.91	68.11	48.36
22	Umerkot	5,502.92	2.32	121.44	59.15
Total		117,784.49	4,317.59	7,756.21	6,057.52

Disclaimer: 15m resolution satellite Images has been used for preliminary damage assessment and depicts status of flood inundation as of image acquisition date.

Source: Landsat 8 Collection 2, 09 March 2023 5: 50 GMT

